



Beaufort County Public Works

Stormwater Infrastructure

Project Summary

Project Summary: Bradley Road Outfall

Narrative Description of Project:

Completion: May-11

Project improved 1,979 L.F. of drainage system. Reconstructed 735 L.F. of workshelf. Cleaned out 1,600 L.F. of outfall ditch and 359 L.F. of lateral outfall ditch. Installed (1) flap gate, 20 L.F. of outfall pipe and rip rap for erosion control.

2011-514 / Bradley Road Outfall	Labor Hours	Labor Cost	Equipment Cost	Material Cost	Contractor Cost	Indirect Labor	Total Cost
AUDIT / Audit Project	1.00	\$20.48	\$0.00	\$0.00	\$0.00	\$0.00	\$20.48
COMP / Compile Project	1.00	\$20.48	\$0.00	\$0.00	\$0.00	\$0.00	\$20.48
FLAPGATE / Flapgate - Installed	37.00	\$851.16	\$99.84	\$2,045.01	\$0.00	\$0.00	\$2,996.01
HAUL / Hauling	93.00	\$2,054.76	\$1,237.83	\$811.03	\$0.00	\$0.00	\$4,103.62
LM / Loading Materials	1.50	\$32.13	\$44.63	\$10.47	\$0.00	\$0.00	\$87.23
ODCO / Outfall ditch - cleaned out	112.00	\$2,670.55	\$394.96	\$1,245.44	\$0.00	\$0.00	\$4,310.95
WSDR / Workshelf - Dressed	20.00	\$409.60	\$141.70	\$61.08	\$0.00	\$0.00	\$612.38
Indirect Labor, Services and Supplies	0.00	\$0.00	\$0.00	\$0.00	\$0.00	\$4,212.55	\$4,212.55
2011-514 / Bradley Road Outfall Sub Total	265.50	\$6,059.16	\$1,918.96	\$4,173.03	\$0.00	\$4,212.55	\$16,363.70
Grand Total	265.50	\$6,059.16	\$1,918.96	\$4,173.03	\$0.00	\$4,212.55	\$16,363.70

Before



After



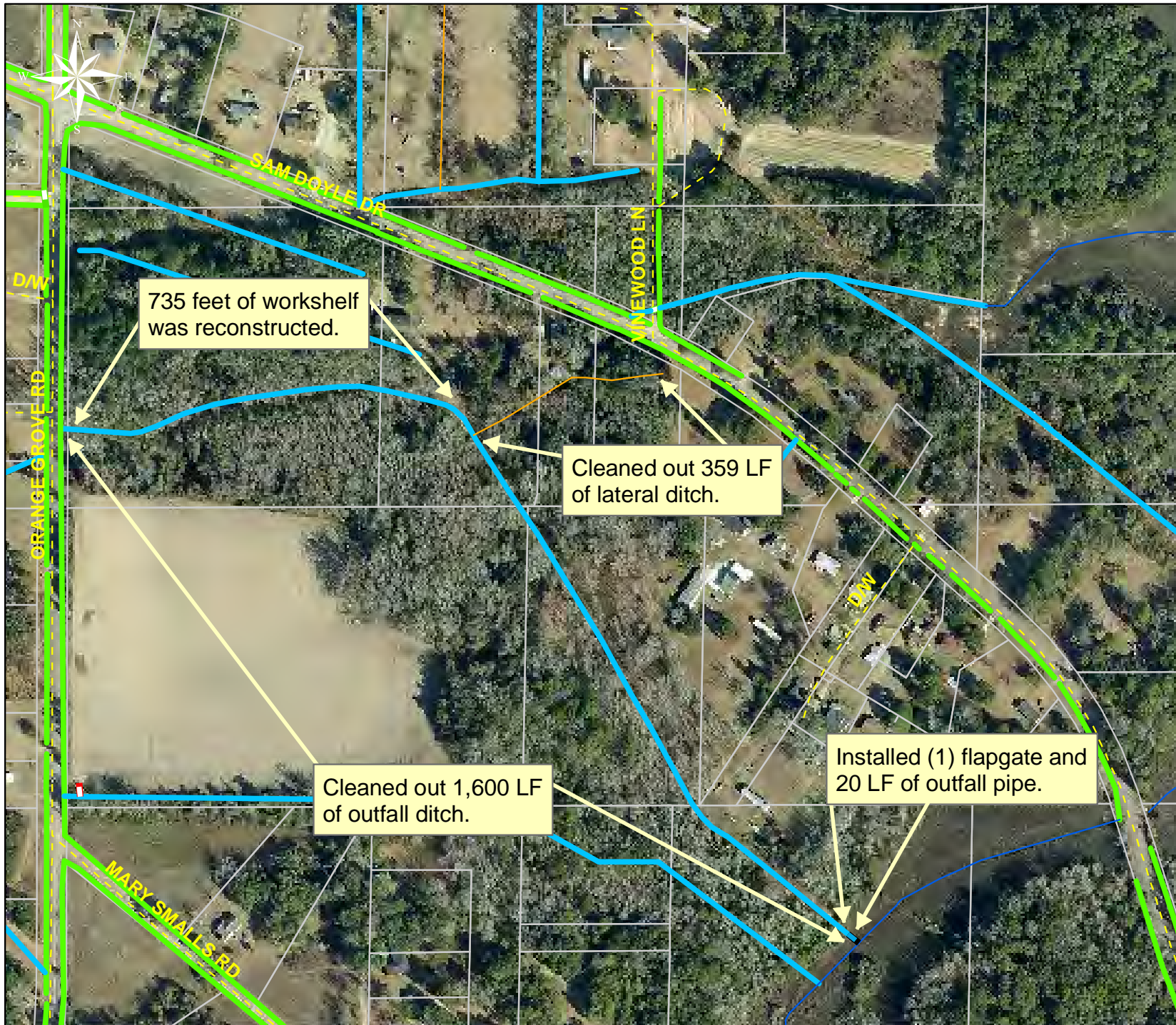
Project: Bradley Road Outfall

Activity: Drainage Maintenance

Project #: 2011-514

Township: St. Helena Island

Completed: May 2011



Legend

Drainage Type

- River
- Stream
- Outfall
- Lateral
- Lateral Pipe
- Roadside
- Roadside Pipe
- Road Pipe
- Crossline
- D/W
- Access
- Piped
- Bleeder
- Parcels



1 inch = 302 feet